


# 5 GAS COMBUSTION ANALYZER

## UNLOCK THE MYSTERIES OF COMBUSTION CHEMISTRY

The model 8000 non-display is a portable stand alone unit able to test a vehicle in your shop or on the road. Power is supplied by the vehicle under test or an optional 110/220 VAC converter. Connect computer via RS232/USB adaptor, see LabView software flier for more screen shots.

It is designed to meet BAR 97 ( EPA ASM ) and OIML R99 Class 0 standards. The 8000 model uses all updated electronics. The unit is compact featuring robust metal housing designed to withstand the most difficult shop or mobile environments. The unit can be shipped as a four or five gas analyzer.

- Updated electronics
- Heavy duty filter/sampling systems
- Connect via RS232/USB adaptor
- Record gas tests, review analysis in g/mile
- Print out reports, export to excel
- 1 yr. Parts & labor warranty
- 18 Month IR bench warranty
- Made in USA 

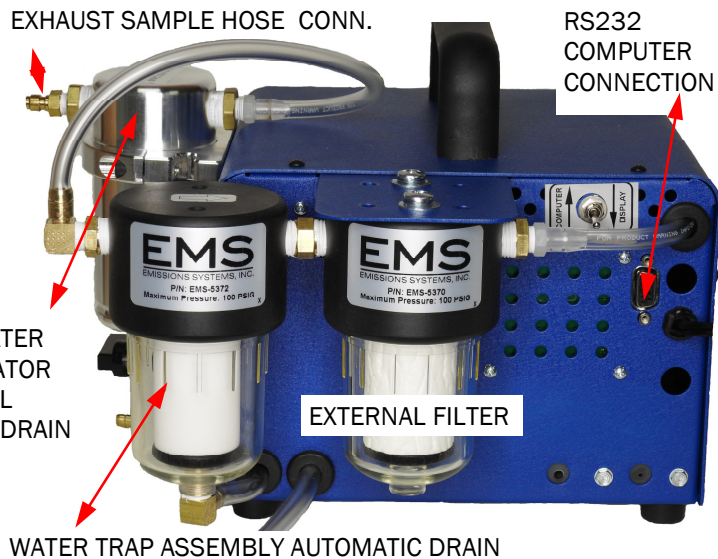


# PORTABLE



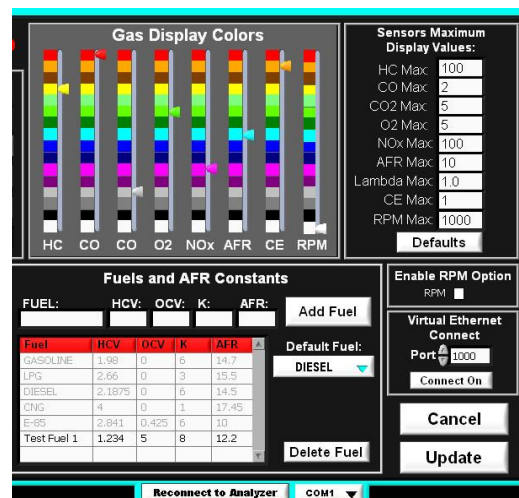
**TEST, DON'T GUESS: ACCELERATE YOUR CUSTOMERS PAST THEIR COMPETITION BY USING AN EMS 5 GAS COMBUSTION ANALYZER**

- Use the EMS 8000 as a stand alone or for road tests.
- Connect to a PC via the serial port with the included EMS LabView Software.
- Software allows live reading, recorded tests and view gas data with analysis screen.
- Connect the analyzer with RS232/USB adaptor included.
- Heavy duty filter system the most reliable in the industry with new oil/water separator.
- Easy calibration routine.
- Pre/Post Cat test screen
- Custom Fuel set up



### Specifications EMS 8000 Non-Display Model:

- Power: 10 -16 VDC
- Ranges:
  - HC: 0 - 2000 ppm Low Range
  - HC: 0-20,000 ppm High Range
  - CO: 0 - 10%
  - CO2: 0 - 20%
  - O2: 0 - 25%
  - NO: 0 - 5000 ppm ( Nitric Oxide ) \*
- Warm up: Less than 5 minutes
- Display resolution:
  - HC: 1 ppm vol.
  - CO: 0.01% vol.
  - CO2: 0.1% vol.
  - O2: 0.01% vol.
  - NO: 1ppm\*
- Display: Computer/Laptop screen Displays all 5 gaes, AFR & LAMBDA, supplied by others
- Accuracy ( Bar 97 EPA ASM )
  - HC: 4 ppm HC
  - CO: 0.02% CO
  - CO2: 0.3% CO2
  - O2: 0.1% O2
  - NO: 25 ppm\*
- Drift: Zero and span drift are less than  $\pm 0.6\%$  of full scale for the first hour and less than  $\pm 0.4\%$  of full scale per hour thereafter.
- System response time: Bench: 1.5 Sec/25 ft. hose 5 sec. to 90% of final reading
- Ambient conditions: 35F (2C) to 120F (45C), rel. humidity 0-98%
- Sample hose: 25 feet ( 7.5 m) with QD coupling /200 F Degrees Max.
- Sample probe: Stainless steel 1200 Degrees F ( replaceable flex tip )
- Mass: Approx.: 10 LBS. ( 4.5 Kg )



PO BOX 7086, ALGONQUIN IL. 60102  
 TEL./FAX : 847-669-8044  
 E-MAIL: sales@emsgas.com